

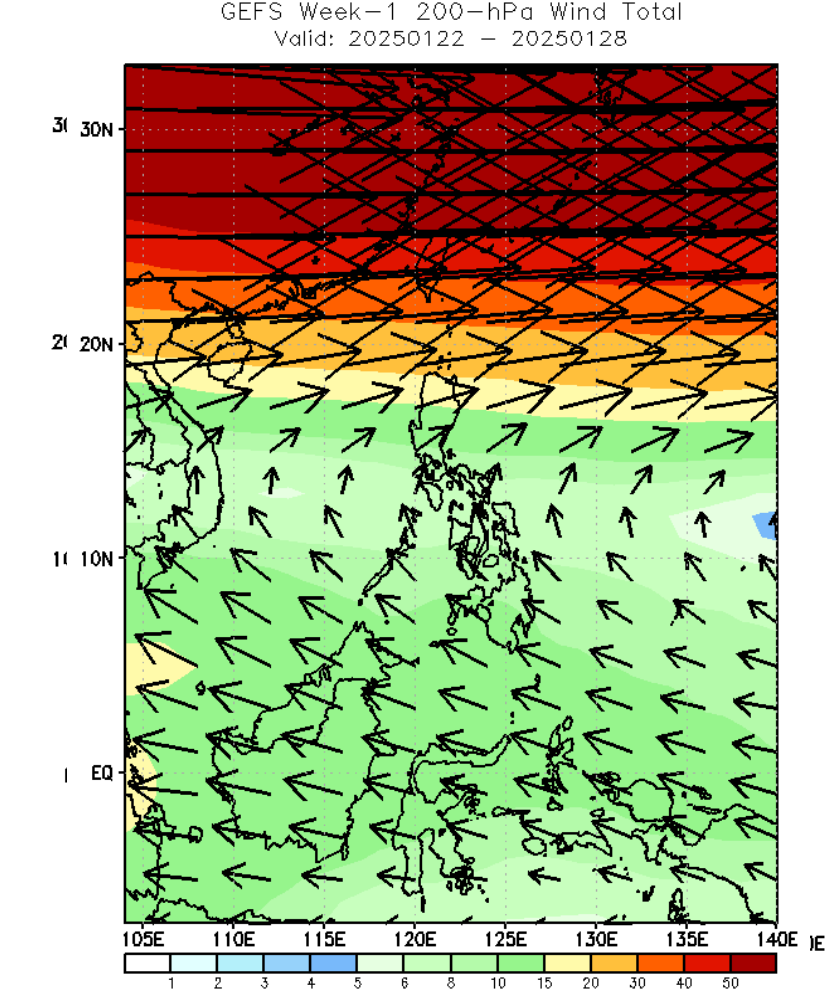
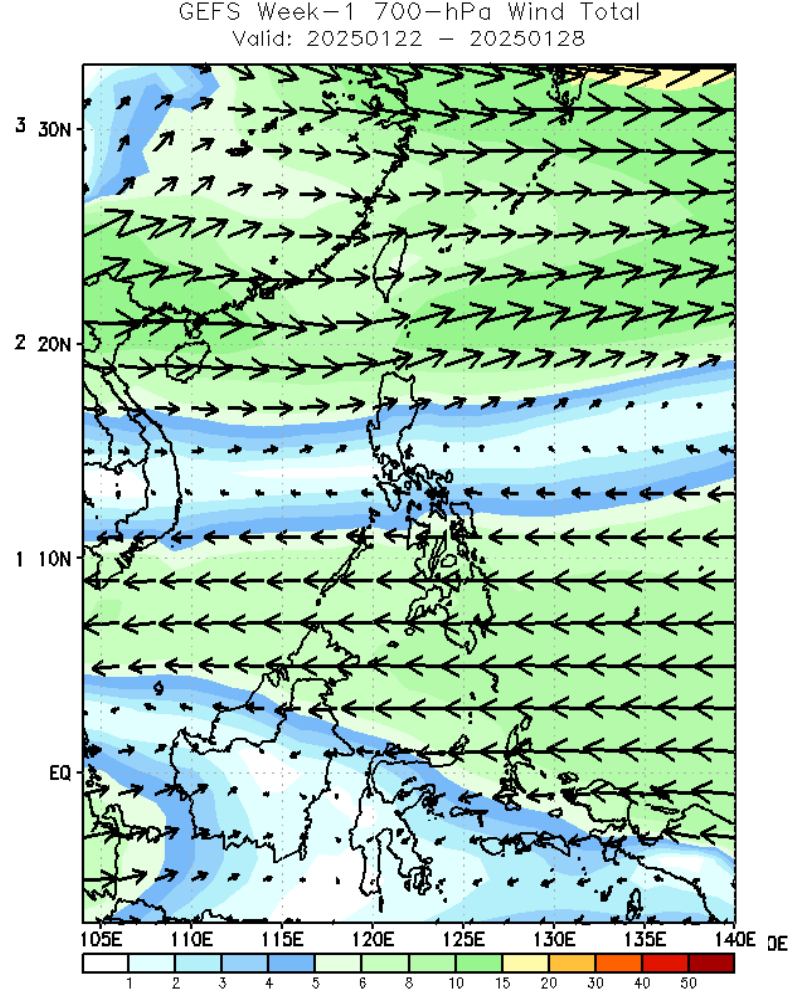
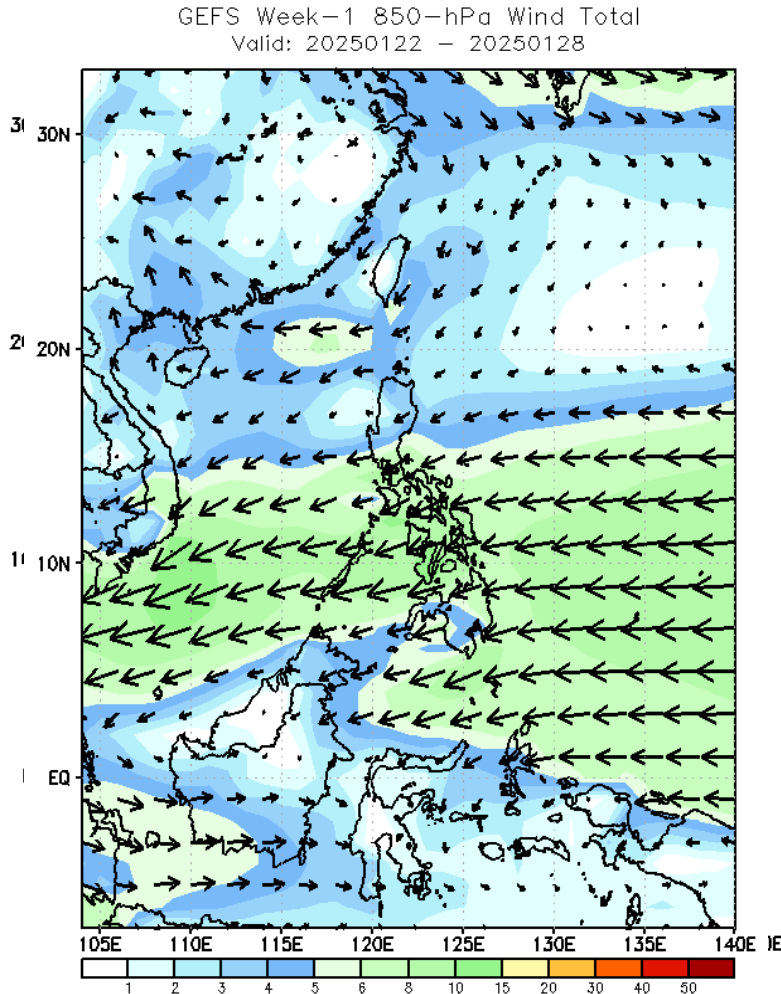


# Week 1 & Week 2 Forecast for the Philippines using GEFS Model



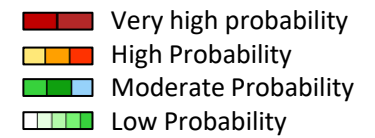
# GEFS Week-1 Wind Forecasts:

Week 1: Jan 22-28, 2025



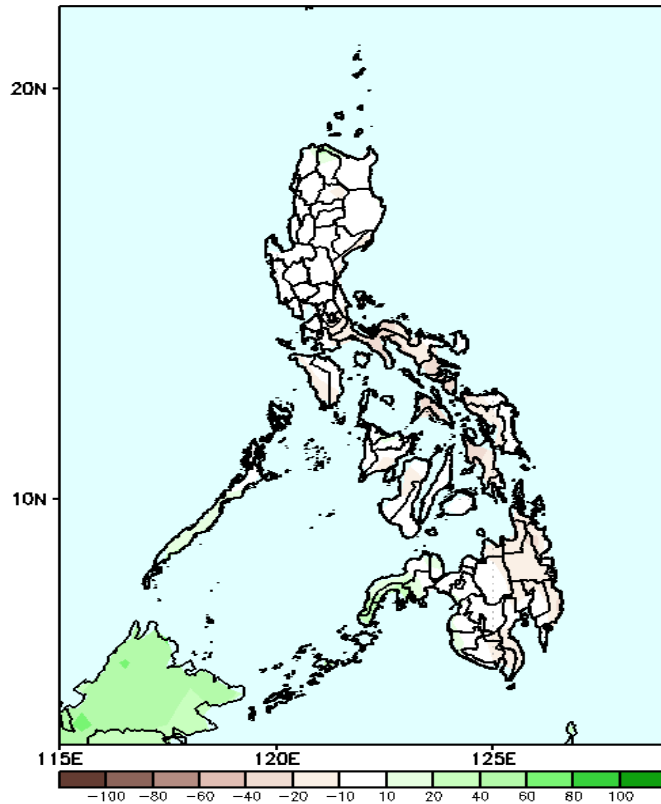
Northeast Monsoon affecting Extreme Northern and Central Luzon while Easterlies affecting the rest of the country during the forecast period

# Precipitation Anomaly and Exceedance Probability > 25/50 mm



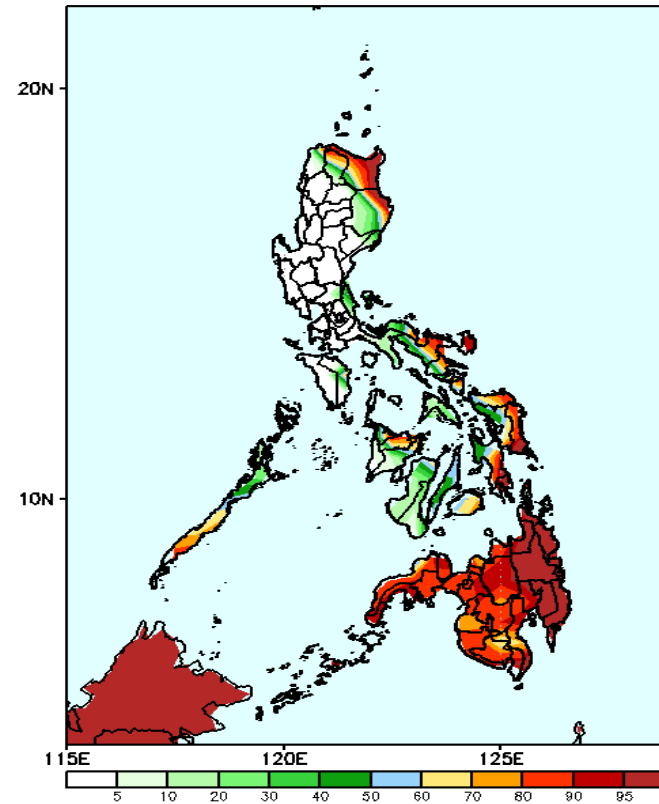
Week 1: Jan 22-28, 2025

GEFS Week-1 Precip Anomaly  
Valid: 20250122 - 20250128



Rainfall reduction of 10-20mm is expected in most parts of the country over the forecast period.

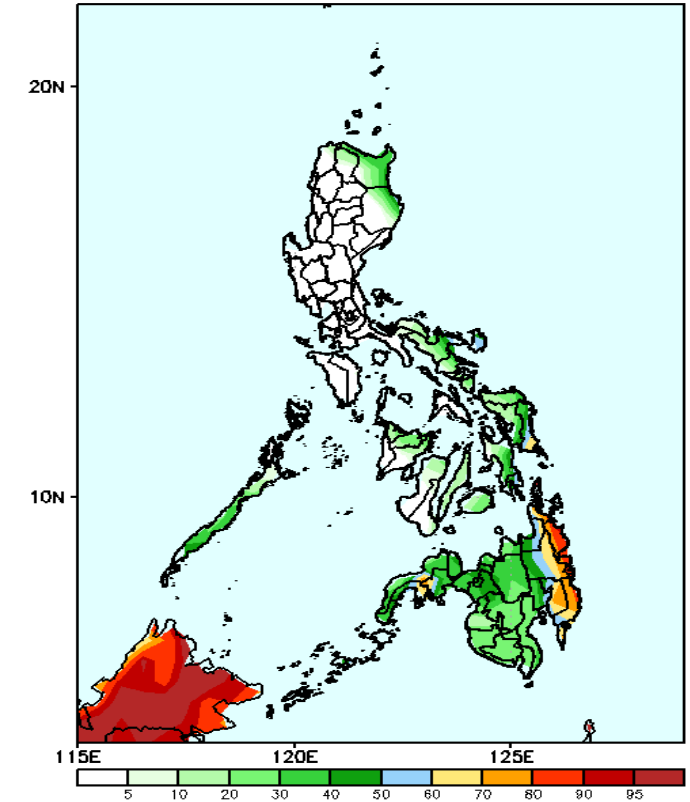
GEFS Week-1 Exceedance Prob. > 25mm  
Valid: 20250122 - 20250128



## Probability to Exceed 25mm

- High to very high over the eastern parts of Cagayan and Isabela, Eastern Samar, Southern Leyte, and most of Mindanao;
- Moderate to high over Apayao, the rest Cagayan and Isabela, Bicol Region, southern Palawan, Aklan, Capiz, Central Visayas and the rest of Eastern Visayas;
- Low to Moderate over the rest of Eastern Luzon and Visayas.

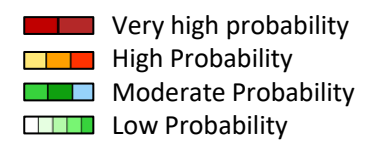
GEFS Week-1 Exceedance Prob. > 50mm  
Valid: 20250122 - 20250128



## Probability to Exceed 50mm

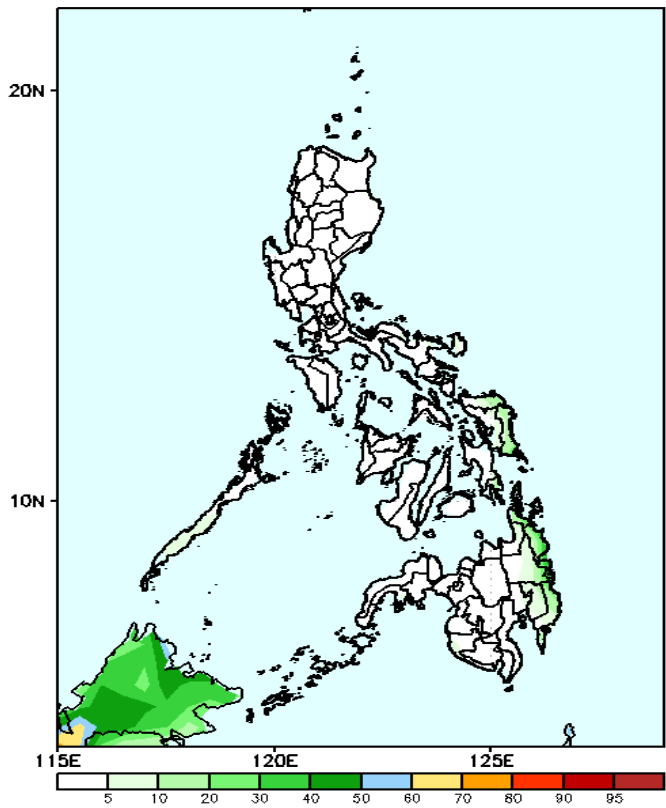
- Moderate to high over Catanduanes, Eastern Samar, Eastern Mindanao and the central part of Zamboanga Peninsula;
- Low to moderate over the rest of Mindanao;
- Low over the rest of the country.

# Exceedance Probability > 100/150/200 mm



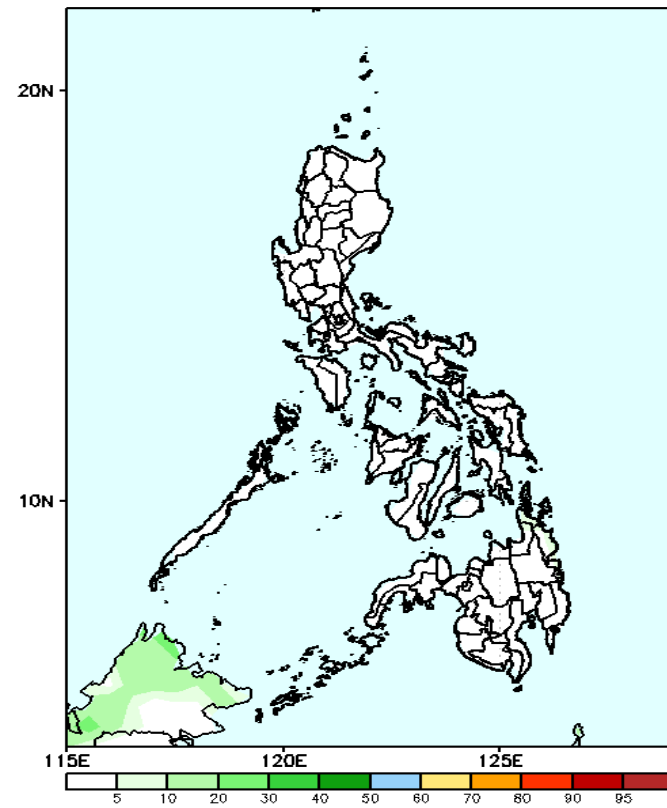
## Week 1: Jan 22-28, 2025

GEFS Week-1 Exceedance Prob. > 100mm  
Valid: 20250122 - 20250128



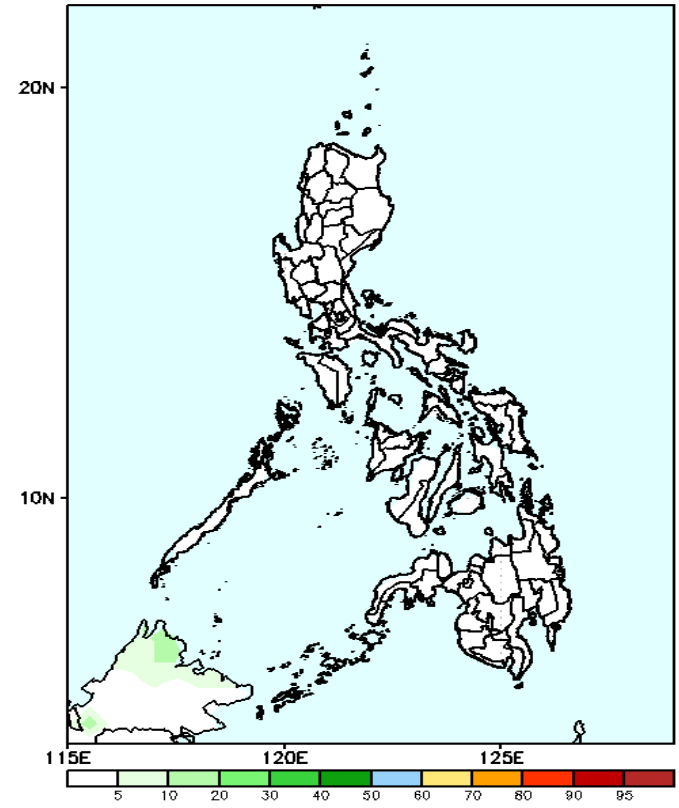
**Probability to Exceed 100mm**  
• Low across the country.

GEFS Week-1 Exceedance Prob. > 150mm  
Valid: 20250122 - 20250128



**Probability to Exceed 150mm**  
• Low across the country.

GEFS Week-1 Exceedance Prob. > 200mm  
Valid: 20250122 - 20250128

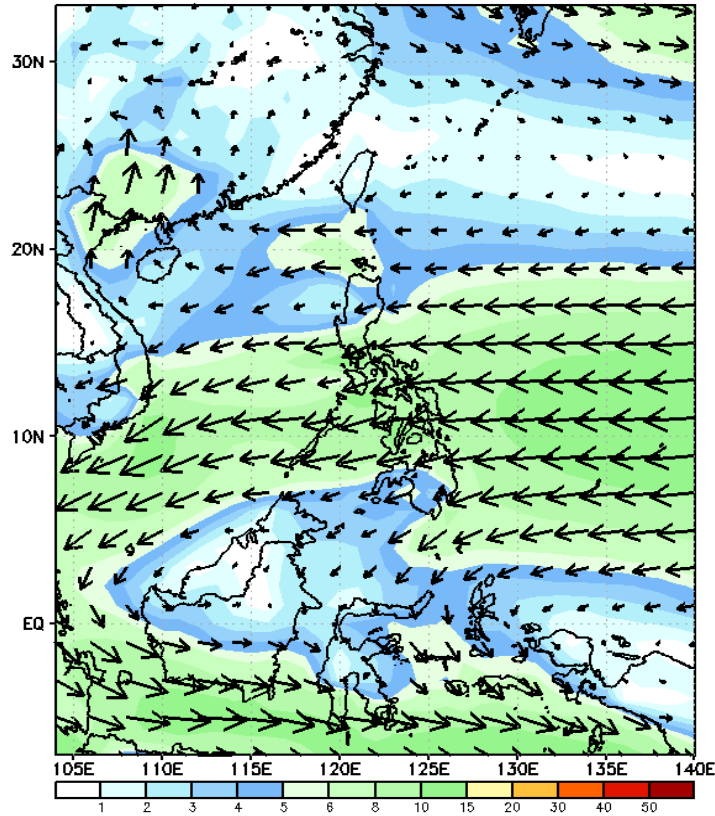


**Probability to Exceed 200mm**  
• Low across the country.

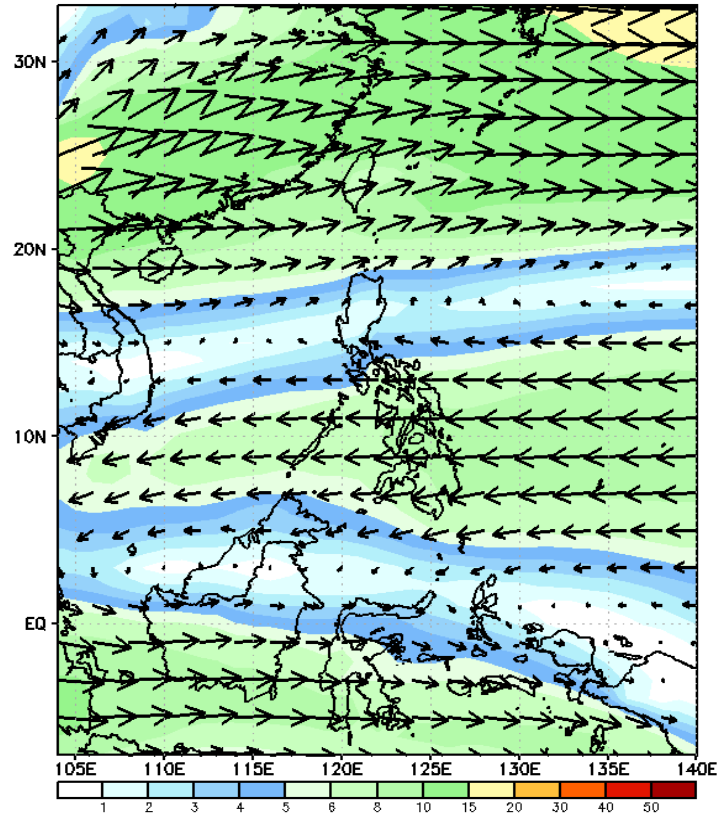
# GEFS Week-2 Wind Forecasts:

Week 2: Jan 27- Feb 02, 2025

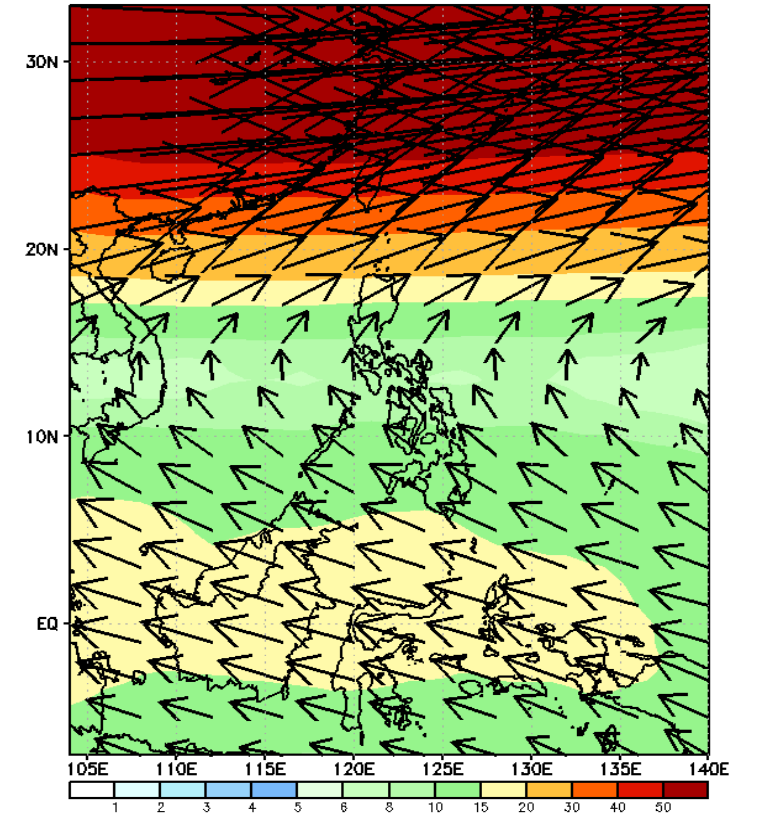
GEFS Week-2 850-hPa Wind Total  
Valid: 20250129 - 20250204



GEFS Week-2 700-hPa Wind Total  
Valid: 20250129 - 20250204

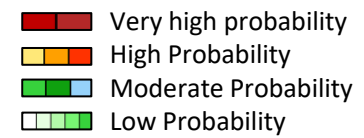


GEFS Week-2 200-hPa Wind Total  
Valid: 20250129 - 20250204



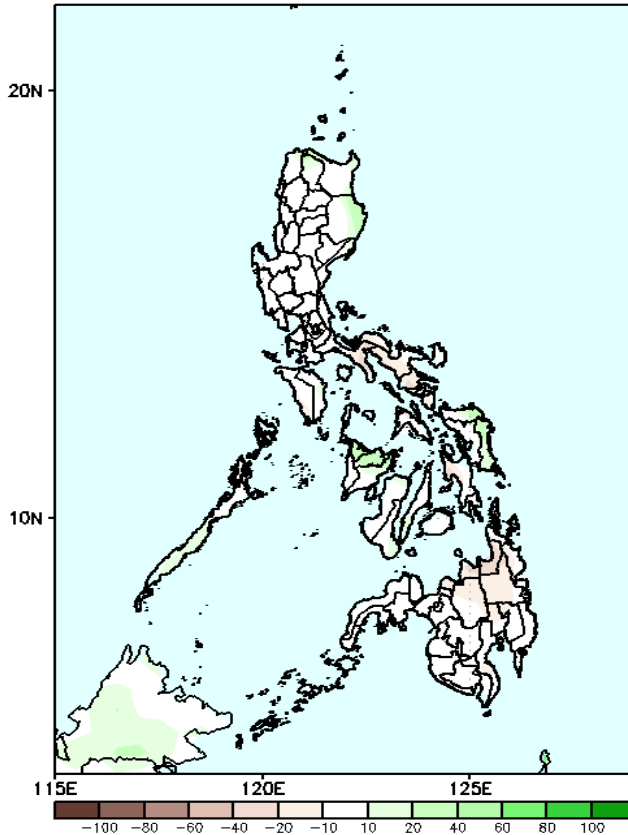
Northeast Monsoon will likely affect Extreme Northern Luzon while Easterlies will likely affect the rest of the country during the forecast period

# Precipitation Anomaly and Exceedance Probability > 25/50 mm



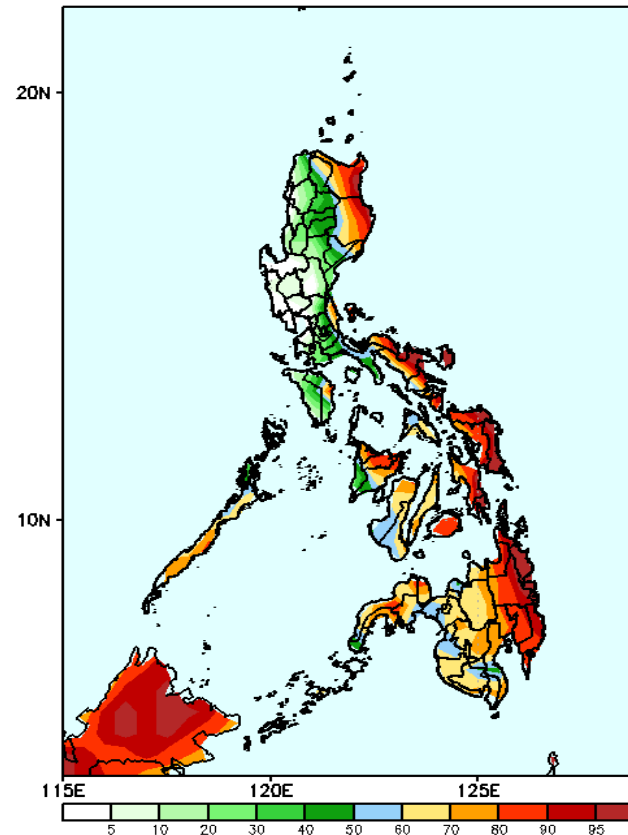
## Week 2: Jan 29- Feb 04, 2025

GEFS Week-2 Precip Anomaly  
Valid: 20250129 - 20250204



Increase rainfall of 10-40mm is expected in some areas in Apayao, Isabela, and some areas in Visayas.

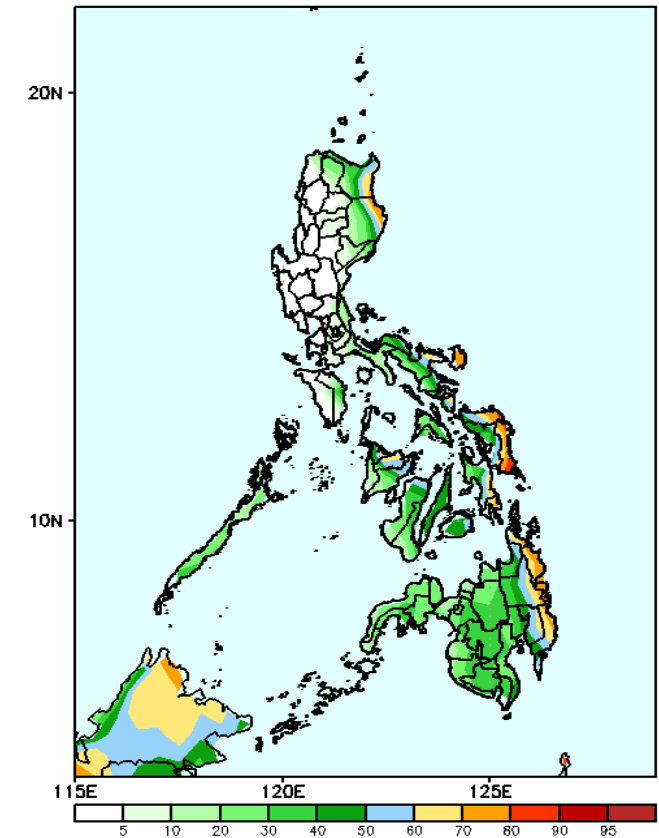
GEFS Week-2 Exceedance Prob. > 25mm  
Valid: 20250129 - 20250204



PROBABILITY TO EXCEED 25mm

- High to very high over Batanes, Cagayan, eastern part of Isabela, Bicol Region, most parts of Eastern and Central Visayas and Eastern Mindanao;
- Moderate to high over the rest of Isabela, the rest of Eastern and Southern Luzon, and the rest of Visayas and Mindanao;
- Low to moderate over the rest of Luzon.

GEFS Week-2 Exceedance Prob. > 50mm  
Valid: 20250129 - 20250204



Probability to Exceed 50mm

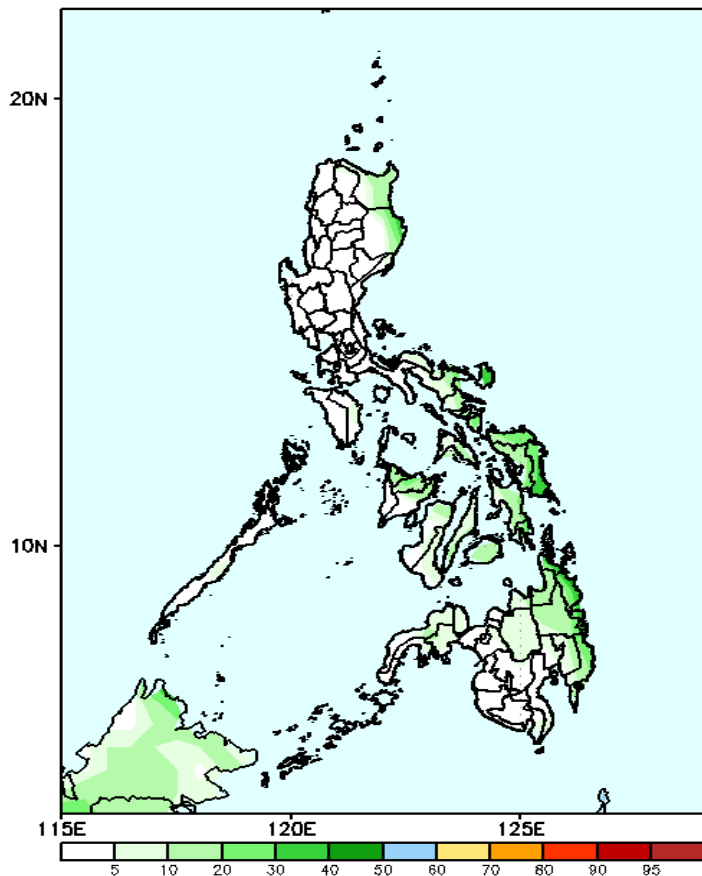
- Moderate to high over Batanes, the easternmost part of Cagayan and Isabela, eastern portion of Bicol Region, northern portion of Panay Island, Eastern Visayas and Eastern Mindanao;
- Low to moderate over the rest of Bicol Region, Visayas and Mindanao;
- Low over the rest of Luzon.

# Exceedance Probability > 100/150/200 mm

- Very high probability
- High Probability
- Moderate Probability
- Low Probability

Week 2: Jan 29- Feb 04, 2025

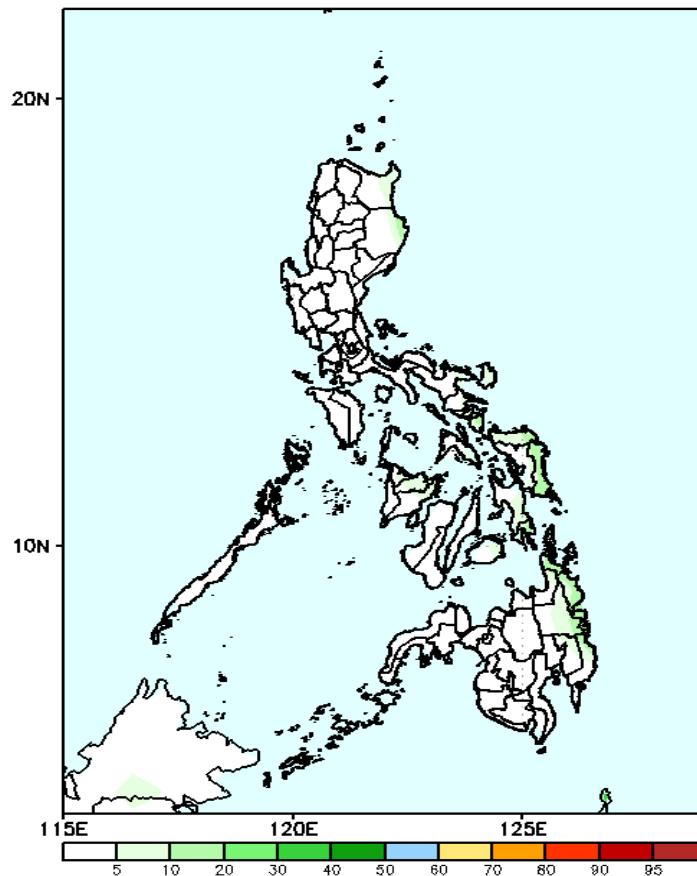
GEFS Week-2 Exceedance Prob. > 100mm  
Valid: 20250129 - 20250204



**Probability to Exceed 100mm**

- Low across the country.

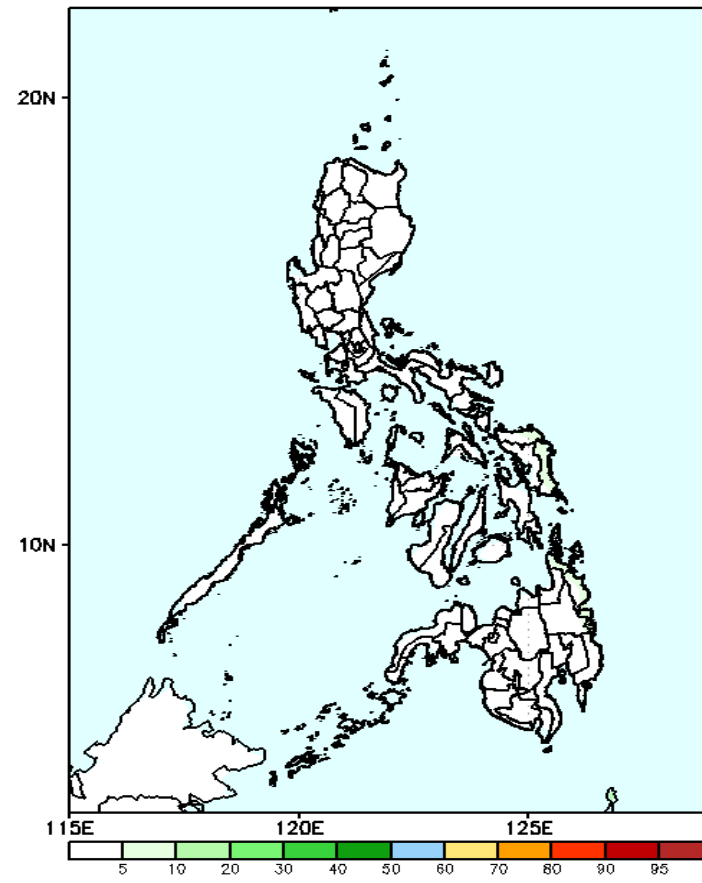
GEFS Week-2 Exceedance Prob. > 150mm  
Valid: 20250129 - 20250204



**Probability to Exceed 150mm**

- Low across the country.

GEFS Week-2 Exceedance Prob. > 200mm  
Valid: 20250129 - 20250204

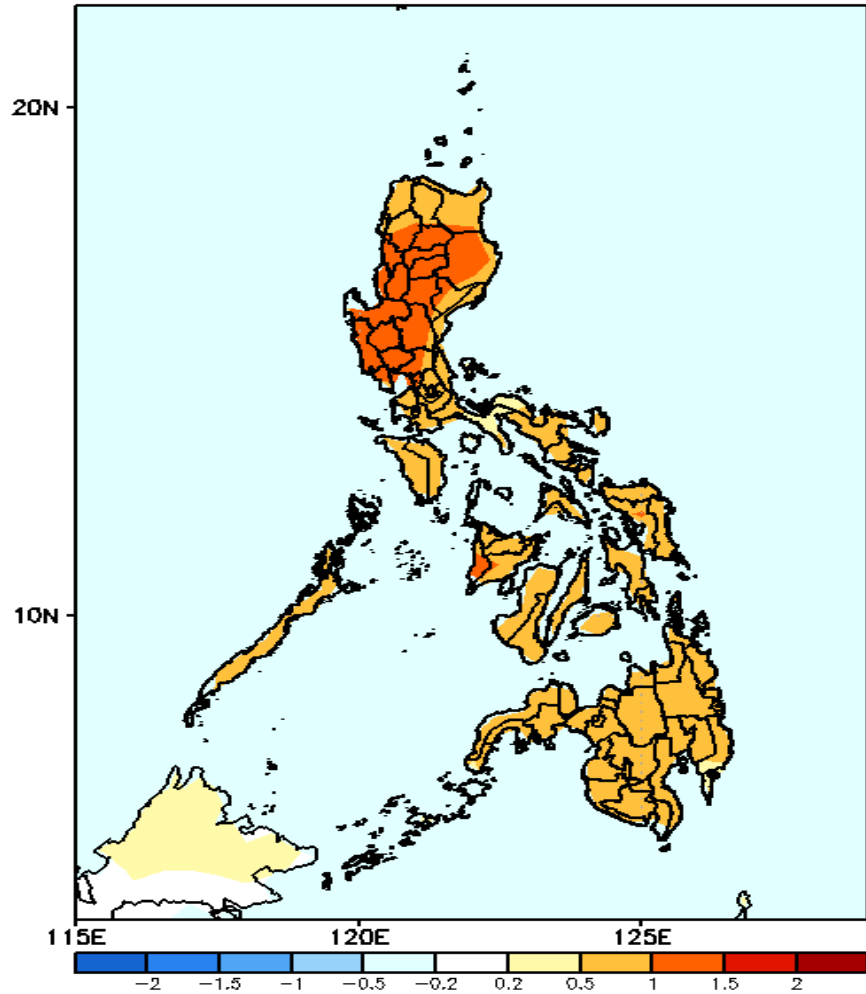


**Probability to Exceed 200mm**

- Low across the country.

# GEFS Week-1 & 2 Forecasts: T2m Anomaly

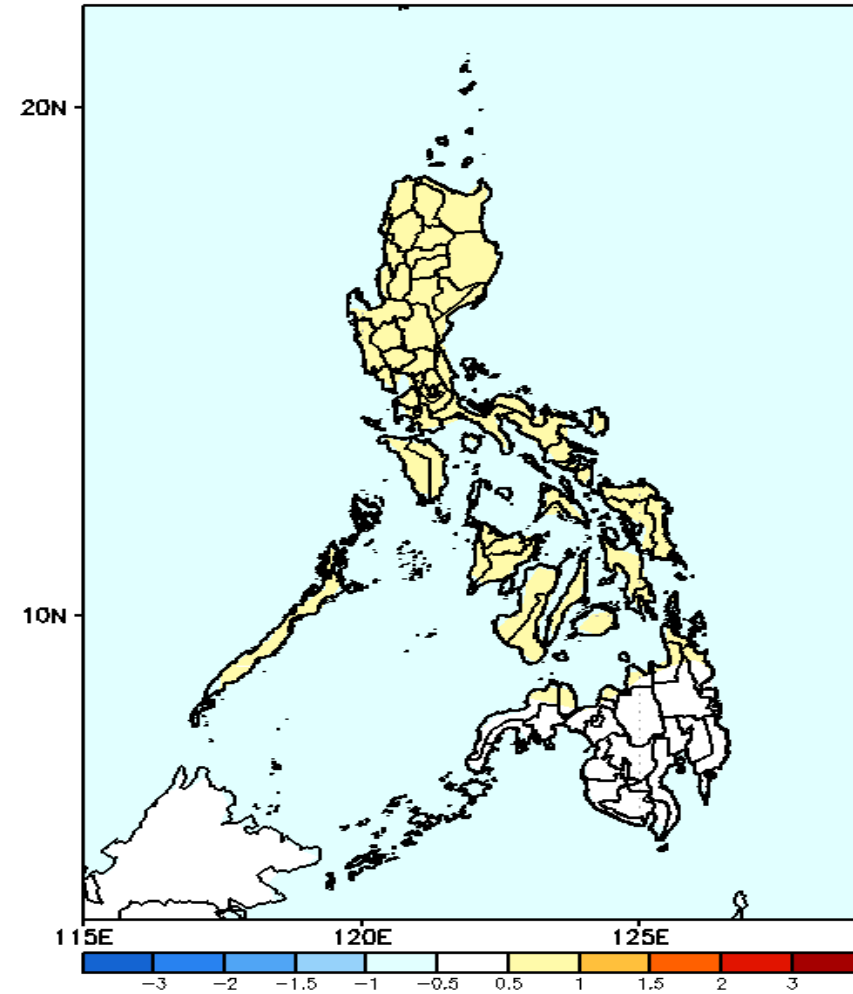
GEFS Week-1 T2m Anomaly  
Valid: 20250122 - 20250128



## 2m Temperature Week 1: Jan 22-28, 2025

Warmer than average surface air temperature will likely be experienced in in most parts of the country.

GEFS Week-2 T2m Anomaly  
Valid: 20250129 - 20250204



## 2m Temperature Week 2: Jan 29- Feb 04, 2025

Near to slightly cooler than average surface air temperature will likely be experienced in Luzon while near to slightly warmer in Visayas and Mindanao.